



Since 1997

I|S|E|

THE INTERNATIONAL
SCHOOL OF ENGLISH
IRELAND



*Language
without Limits*



+353 1 621 9039



www.iseireland.ie



info@iseireland.ie

Contents

04.	ISE	15.	International Foundation
05.	Location and facilities	17.	Student Assessment
06.	Top 10 Nationalities	18.	Work Experience and Internship
07.	What Dublin has to offer	19.	English for Specific Careers
08.	Why choose ISE?	20.	Trinity's Integrated Skills in English (ISE)
09.	General English Courses	21.	Useful Information
11.	Exam Preparation	22.	Accommodation
12.	How the courses work	23.	Student Support
13.	Our course structure	24.	Social Activities
14.	Student Progression		

ACCREDITED BY:



Welcome to ISE



Darragh Price

CEO / Director of Operations

It gives me great pleasure to welcome you to the International School of English. Your decision to come to ISE and fulfill your dreams of learning English in Dublin gives us all at ISE the enthusiasm to deliver the best English Language Course possible.

We feel great pride in you joining us and look forward to exceeding all your expectations during your time at ISE. Along the way during your studies, you will have the opportunity not only to learn and perfect the English Language, but also to experience the rich culture that Dublin City and Ireland has to offer. This opportunity will be made possible through our highly experienced teaching staff and our fun filled social activity calendar.

Thank you for choosing ISE and enjoy your studies. I look forward to meeting all of you during your stay with us.



Since 1997

|I|S|E|
THE INTERNATIONAL
SCHOOL OF ENGLISH
IRELAND

A Quality school that cares

The International School of English is a quality professional school dedicated to delivering the highest Educational standards in International student care. It has been operating successfully **since 1997 with full ACELS and MEI accreditation.**

We are a dedicated Student Management team who pride ourselves on making your experience memorable and worthwhile whilst achieving your personal student goals.

Our experienced and qualified teachers ensure a friendly and

professional language learning experience with cutting edge teaching methodologies which are tailored to individual needs achieving results in language and ensuring outcomes for students. ISE is a fully accredited English language school located in Dublin 2 just off Grafton street – famous for its tourist attractions and cultural atmosphere within walking distance of the school. ISE Ireland is located in the heart of the city centre and all areas are within easy and immediate access.

What makes us different

- **High quality personalized attention** for each student with our quality student care management system.
- **Small classes** with consistent development and practice in reading, writing, listening and speaking.
- **Regular weekly feedback** on student progress in class and consultations with quality teachers who care and help you to progress in English.
- **Small interactive classes** dedicated to maximize student participation and involvement.
- **Student afternoon activities** to local cultural and historical events and landmarks of interest.
- **Experienced qualified TEFL** teachers who are passionate about helping you improve your English language skills and achieve your academic goals.

Location and facilities

ISE Ireland is situated on 26 Harcourt St. off the south west corner of St. Stephen's Green in **Dublin City Centre**. It is on the LUAS (tram system) line which services from Grafton Street (one stop) to the north and to the Green Line Sandyford in the South. Grafton Street and its surrounds would arguably be

Ireland's most exclusive shopping district. Temple Bar and all major attractions are all within walking distance of our school.

Short walking distance from **Dublin's premier shopping centre**.

Short walking distance from the main **Train station** and **LUAS line**.

Short walking distance from **Grafton Street, Temple Bar,** and **St. Stephen's Green**.



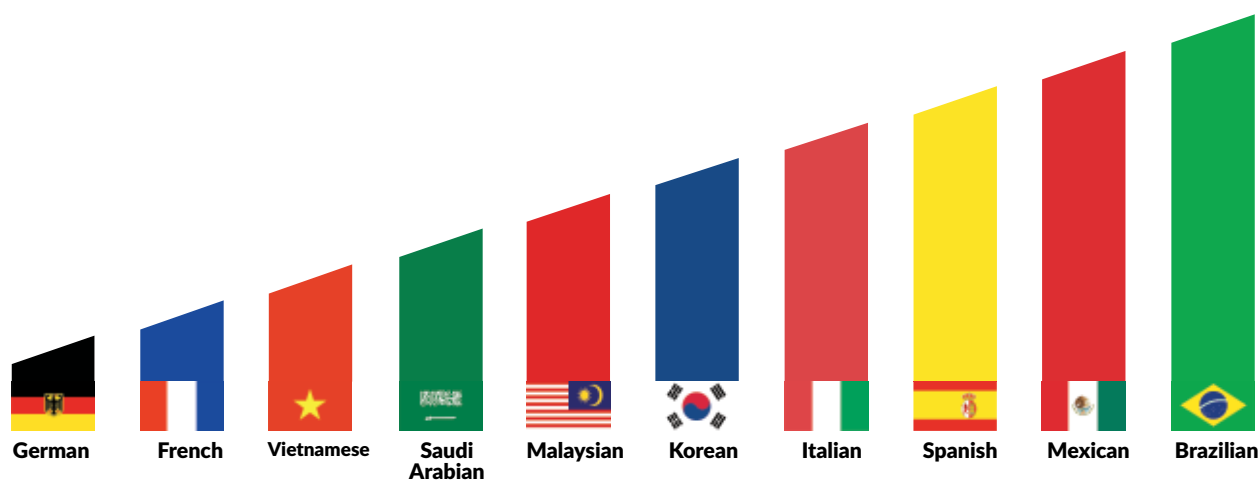
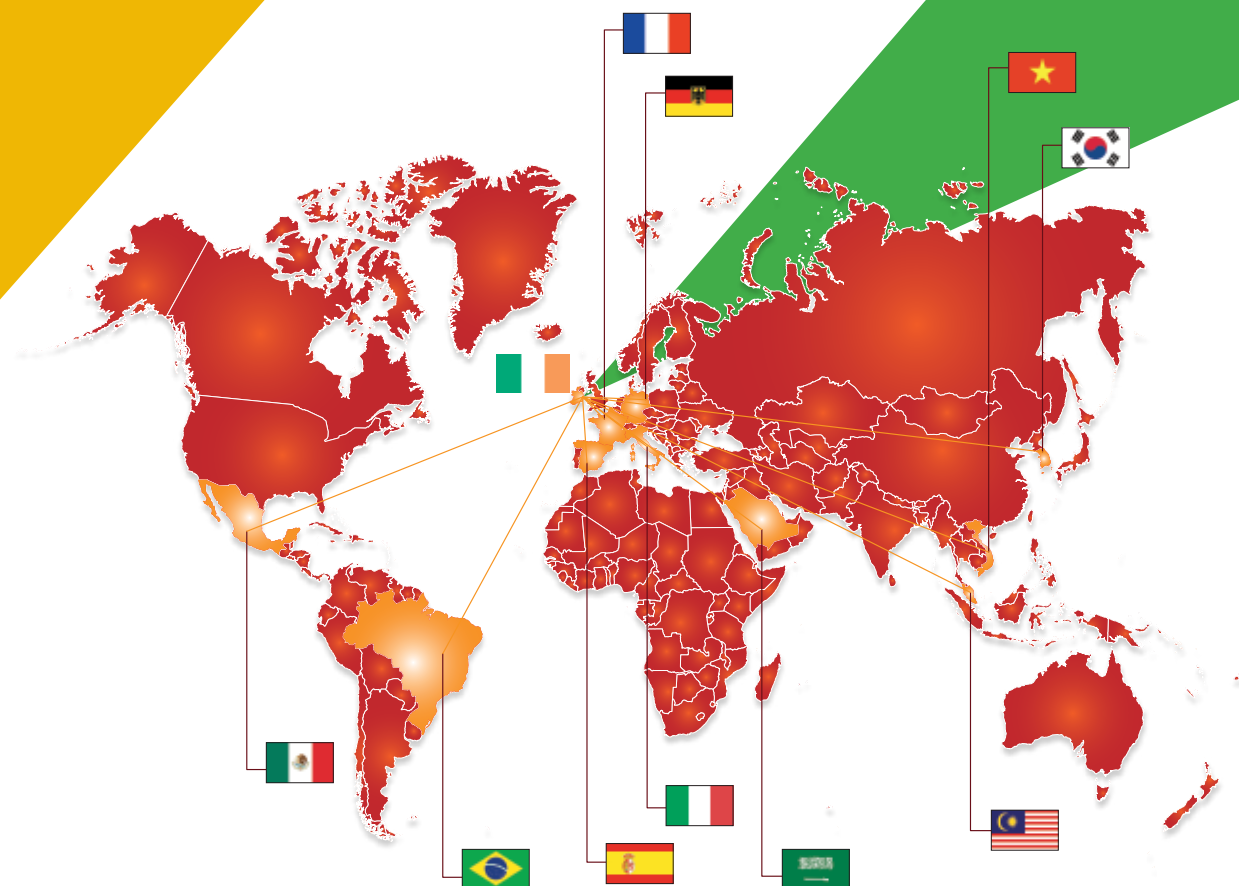
- 01 - ISE
- 02 - Spire
- 03 - St. Patrick's Cathedral
- 04 - St. Stephen's Green
- 05 - Temple Bar
- 06 - Trinity College
- 07 - Dublinia
- 08 - Dublin Castle
- 09 - General Post Office
- 10 - Guinness Storehouse
- 11 - Ha'penny Bridge
- 12 - Smithfield

LUAS
● Green Line
● Red Line



- Large well-equipped classrooms
- Comfortable student common room and dining area
- Library equipped with computers
- Student Canteen
- Free WIFI

Top 10 Nationalities



What Dublin has to Offer

Do you have a cultural appetite?

Dublin is the feast you have been waiting for.

From Literature to Music, from playwrights to street performers and many more, you will not be found idle during your time in Ireland. Dublin comes alive at night to the sound of activity, music and fun. **The perfect setting to learn and practice your English.** Learn about the famous musicians that Ireland has exported all over the world, and experience their inspirations in Dublin.

Are you feeling peckish?

What Dublin does great, is the best burgers you have ever tasted. **You will never go hungry in Dublin.**



Dublin offers a wide mix of cuisines from all over the world conveniently located in Dublin city centre. Be sure to sink your teeth into the Burger capital of Europe and taste the 100% Irish meat.



Nightlife

ISE is positioned in the heart of Dublin, and we are lucky that our friendly neighbours are the two biggest nightclubs in Ireland. So get to know your classmates the old fashioned way out on the town in friendly Dublin. We **have hundreds of Bars, Pubs and Nightclubs for you to practice your English.**



Nature in Dublin

Did you know Dublin is home to **the largest city park in Europe (The Phoenix Park).**

If you want to get away from the hustle and bustle of Dublin city centre, **take a Dublin bike and get lost in this wooded gem in the real heart of Dublin.**

Be sure to stop by and feed the deer some carrots, they are very hungry.

Museums

After practicing your English in the pubs and nightclubs of Dublin, take some time to visit the many Museums that Dublin has to offer. Learn how the Coopers made the old wooden beer barrels for the **Guinness Factory** or take a stroll around the **Natural History Museum** and set your imagination free.



Why choose ISE?

1

We ensure quality service and care to all our students and maintain high level of customer satisfaction.



2

Our aim is clear, to maintain the highest quality academic reputation internationally and unbeatable student experience.



3

Offering market leading language programmes in line with MEI/ACELS quality assurance procedures.



4

To welcome all students into a comfortable learning environment and inspire them to learn English and achieve their goals.



5

We have the utmost respect for all visitors who decide to come to ISE, for putting your faith in us, we won't give up on believing in you.



General English Courses

“ We prefer this school because of the teachers they are very kind and friendly.”



Hayng - Gi Kim and
Jee Suk Choi
South Korea

General English

(15 hours per week)

Minimum level: Elementary (A2)
Course length: 2 - 48 weeks

RECOMMENDED FOR:

Students who wish to develop their English and experience Irish life and culture.

COURSE DETAILS:

In the morning, students will be presented with new language structures and vocabulary focusing on the meaning, form and phonology of the language.

In the second part of the morning students focus on developing their skills – reading, writing, speaking and listening by incorporating the language presented in the first part of the morning.

NEXT STEPS:

Students who feel they have reached a comfortable level of competency in General English could progress to an exam preparation class in order to gain an internationally recognised award or enrol in an ESP course which relates specifically to their professional or educational field.

Semi-Intensive English

(20 hours per week)

Minimum level: Elementary (A2)
Course length: 2 - 48 weeks

RECOMMENDED FOR:

Students who wish to develop their speaking and listening skills more rapidly and who require extensive practice in conversational English.

COURSE DETAILS:

In the morning, students will be presented with new language structures and vocabulary focusing on the meaning, form and phonology of the language. This is followed by a focus on developing skills – reading, writing, speaking and listening by incorporating the language presented in the first part of the morning. Two afternoons a week, students are given the opportunity to develop their fluency and expand their vocabulary for both formal and informal contexts. Contemporary issues, current news stories and items of cultural interest are used as topics of discussion and study.

NEXT STEPS:

This course will help prepare students for entry into a Business English or Academic preparation course.

Intensive English

(30 hours per week)

Minimum level: Elementary (A2)
Course length: 2 - 48 weeks

RECOMMENDED FOR:

Students who require quick progress or who have limited time to study. It is also suitable for students who enjoy totally immersing themselves in a language or who wish to work on their pronunciation.

COURSE DETAILS:

The course follows the same structure as the Intensive English course with an additional two afternoons a week spent focusing on phonological and grammatical development. Students can work on pronunciation issues which may have become ‘fossilized’ and gain a deeper understanding of the structure of English grammar.

NEXT STEPS:

This course will help prepare students for entry into a Business English or Academic preparation course.

English Courses

One-to-One tuition

Minimum level: Intermediate (B2)
Course length: 2 - 48 weeks

RECOMMENDED FOR:

Students who wish to follow a tailored course which is designed specifically for their language needs or students who wish to supplement another course with focused tuition.

COURSE DETAILS:

Students can avail of one-to-one tuition for up to twenty hours per week or combine it with other courses. Students undergo a Needs Analysis on their first day of one-to-one and together with their teacher negotiate a syllabus which best suits their needs.

NEXT STEPS:

As part of one-to-one tuition, teachers will advise students as to the best options available to reach their goals.

Business English

(20 hours per week)

Minimum level: Intermediate (B2)
Course length: 2 - 48 weeks

RECOMMENDED FOR:

People who use English as their primary language for professional communication or who work in an international context.

COURSE DETAILS:

In the morning, students will be presented with new language structures and vocabulary focusing on the meaning, form and phonology of the language. This is followed by a focus on developing skills – reading, writing, speaking and listening by incorporating the language presented in the first part of the morning.

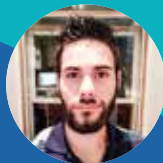
In the afternoon, students are presented with a variety of business tasks which mimic situations in their professional lives. In small groups, professionals extend their business-related vocabulary, undertake case studies and execute typical business tasks, such as:

- Presentations
- Networking
- Creating Reports
- Negotiations

NEXT STEPS:

In order to focus on the language requirements of a specific industry, students can combine their Business English with one-to-one tuition.

Exam Preparation



“I had the most incredible teacher I could have ever asked for! Inge gave me a huge support in my studies, helping me even after her working hours and also after my course completion, making me able to achieve my so desired score in the IELTS exam. I am so grateful for having had Inge as my English teacher at ISE.”

My ielts score 7.5.

Gustavo Teles Domingues
Brazil

Cambridge Preparation Courses

Minimum level: Intermediate (B2)
Course length: 9 & 13 weeks
Dates: Jan, March, June, September

RECOMMENDED FOR:

Students looking to prepare for the Cambridge ESOL suite of exams.

COURSE DETAILS:

The following Cambridge ESOL exam preparation courses are offered:

- FCE (First Certificate in English)
- CAE (Certificate in Advanced English)
- CPE (Certificate of Proficiency in English)

Exam teachers will prepare students for each section of the exam and recommend self-study material to learners in areas where they most need improvement. Working from relevant material and past papers, our exam preparation teachers will provide weekly tests and updates of learners' progress in order to maximize exam success.

NEXT STEPS:

Cambridge ESOL exams are recognized worldwide as a reliable indication of a person's English language proficiency. Whether applying for a job, seeking entry to a university or even going for promotion; these exams give learners an important advantage.

Crash Cambridge Course (FCE)

Minimum level: Intermediate (B2)
Course length: 4 weeks
Dates: 5 June-20 July, 23 July-17 Aug

RECOMMENDED FOR:

Students who require the FCE exam for university or work purposes.

COURSE DETAILS:

The 'Crash Course' is an intensive preparation programme which immerses students in the format, timing and content requirements of the FCE examination.

Exam teachers will prepare students for the 5 papers for the examination: Reading, Speaking - Use of English - Writing - Listening

They will also recommend self-study material to learners in areas where they most need improvement. Working from relevant material and past papers, our exam preparation teachers will provide weekly tests and updates of learners' progress in order to maximize exam success.

NEXT STEPS:

Cambridge ESOL exams are recognized worldwide as a reliable indication of a person's English language proficiency. Whether applying for a job, seeking entry to a university or even going for promotion; these exams give learners an important advantage.

IELTS Exam Preparation

Minimum level: Pre-Intermediate (B1)
Course length: 4, 8, & 12 weeks
Dates: Monthly

RECOMMENDED FOR:

Students looking to take the IELTS (International English Language Testing System) exam.

COURSE DETAILS:

The course focuses on preparing students for the four papers (Reading, Writing, Speaking and Listening) of the IELTS exam. Working from relevant material and past papers, our exam preparation teachers will provide weekly tests and updates of learners' progress in order to maximize exam success.

NEXT STEPS:

The IELTS exam is used by institutions, universities and even countries as proof of a person's proficiency in English. It is recognized in over 120 countries and is a great addition to any C.V. We recommend that you check the precise score (e.g. 6.0, 6.5) required for your purpose before enrolling on a course.

How the courses work



“ My performance in English has increased, because of the efficiency of teachers. Classes are very dynamic and always different from each other. I am very grateful to ISE for giving me a teaching English to high level. ”

Monique Garcia - Brazil

General English

- 3 hours/day
- 15 hours/week
- Reading, Writing, Speaking and Listening

Sem-Intensive General English

- 3 hours/day + 1 hour/day
- 20 hours/week
- Reading, Writing, speaking and Listening
- + Conversation

Intensive General English

- 3 hours/day + 3 hours/day
- 30 hours/week
- Reading, Writing, Speaking and Listening

Exam Preparation

- 3 hours/day
- 15 hours/week
- Reading, Writing, Speaking and Listening

Semi-Intensive Exam Preparation

- 3 hours/day + 1 hour/day
- 20 hours/week
- Reading, Writing, speaking and Listening
- + Conversation: Exam Strategy + Techniques

Intensive General English + Exam Preparation

- 3 hours/day + 3 hours/day
- 30 hours/week
- Reading, Writing, Speaking and Listening

3 steps to build your English course schedule

1. Main course: General English
2. Select afternoon Special Focus Modules according to your needs
3. Take any optional English extra classes or activities which interest you each day

Included:

- Course materials (photocopies)
- Internet access
- Weekly progress tests
- Tutorials
- Certificate of completion

Our Course Structure

	9:00 - 11:00	11:00 11:15	11:15 - 12:15	12:15 12:30	12:30 - 13:30	Evening
Mon	Introduction to new students; language presentation	Coffee break	Pronunciation and Speaking development skills, e.g. Creating a news show	Break	Intensive IELTS Speaking	DVD
Tue	Language presentation		Reading skills development, e.g. Reading a short novel		Free Conversation Class	Homework
Wed	Language development		Listening and Writing skills development, e.g. Texting and e-mailing		Special Interest class 'Project Management'	Live Irish music in City Centre Pub
Thu	Controlled & free practice of new language items		Vocabulary and revision test of week		One-to-one tuition	Homework
Fri	Conversation development		Cultural appreciation, e.g. Irish music and movies		Social activities	

Group class

Classes last for three hours, in language development classes students focus on topics such as grammar, vocabulary and pronunciation.

One-to-One Tuition

Working with your own personal teacher, 1 to 1 tuition allows you to focus on specific language areas or skills that you wish to improve such as technical vocabulary practice.

Social Programme

Learners are encouraged to participate in a broad range of social activities they are ideal opportunities to use your newfound skills, whilst meeting new people and having fun.

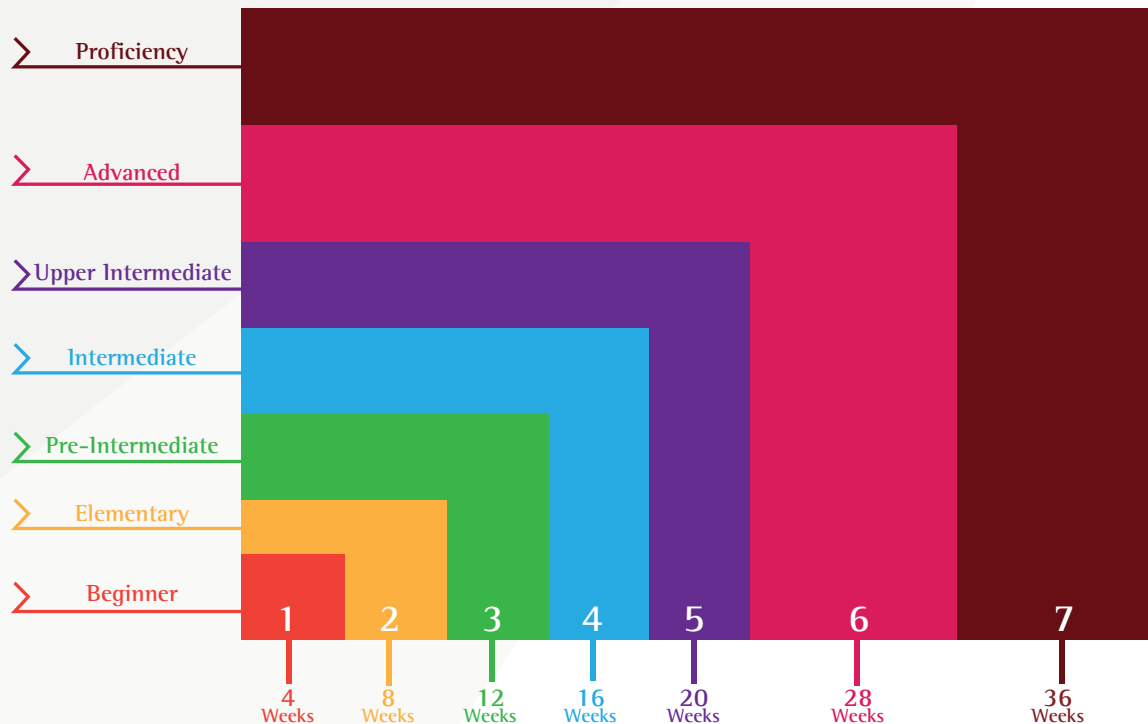
English for Specific Purposes

Learners who require English to further their careers can avail of courses tailored for specific industries.

Homework

Your teacher will give learners regular homework to complete.

Student Progression



The above graph shows the relationship between the levels and the number of weeks according to each student's progress and ability at the end of each compulsory period.

Our teachers will make students aware of opportunities and services to assist them if they are identified as at risk of not making satisfactory course progress.



“ I have studied in ISE during 4 months. It is a really good school. I began in beginner's level and now my level is intermediate. I improve a lot my English with really qualified teachers. They are here to help you and encourage you to speak English. It is a very nice school as well because the students and staff are very kind and welcoming if you have any problem they will find a solution for you. And then the school organize a lot of events to share a good moment with the students and the teachers. I really recommend this school to improve your English and be happy at the same time. ”

Léa Martin - France



INTERNATIONAL FOUNDATION PROGRAMME

Business

Computing

Engineering

Hospitality

Science

Progress to your chosen undergraduate Degree

The International Foundation Programme (IFP) is a three-term programme of academic subjects, study skills and English language training. The IFP is typically conducted over eight months to a year and is designed to prepare students for academic study in a wide range of undergraduate degree programmes. The IFP provides an ideal route for students who wish to gain admissions into degree programmes offered by universities in Ireland or other English speaking countries.

Why study a Foundation course?

This course will prepare you for the challenges of degree study and help you to develop the skills and knowledge you need to succeed at university and beyond. Once you complete the programme and achieve the required grades, you can enter the first year of your undergraduate degree at the University.

Teaching and assessment

You will be taught in small classes by experienced and supportive academics who are experts in university preparation. Your progress will be monitored throughout the course to ensure you are on track with your studies.

Guaranteed University Placement

Students who successfully complete Foundation & IELTS are guaranteed a place into a suitable programme in Irish & UK universities. A conditional offer letter will be issued prior to admission at the International School Of English.

English Language Preparation

If you require additional language training before you start your International Foundation Year, you can join our English Language Preparation programme, taught at ISE Ireland.

Entry Requirement

Applicants must have an English language level of CEFR B1 and have successfully completed high school examinations or equivalent.



Pre-Masters Foundation



ISE's International Pre-master's is designed to enable students to quickly bridge the gap between their existing qualifications and a master's programme. This course is a full-time preparation course designed for EU and international students who wish to improve their linguistic and academic skills in order to study at postgraduate level at another Irish or top UK university.

Subject modules

You will develop knowledge of your chosen area of study so that you have an advanced level of understanding. You will then focus on the particular topics and skills needed to excel in your postgraduate degree at Irish or UK University.

Student tutorials

You will be assigned a Learning Support Tutor who will work with you throughout your course at the College, and support you in achieving your study goals. At these regular meetings, tutors offer valuable advice to help develop both study skills and knowledge, and fully equip students for success at the University.

Academic and language support

Academic and language support is also provided throughout the Pre-Master's course to help you reach your academic and English language goals, and progress to university successfully.

Guaranteed progression

Guaranteed University Placement: Students who successfully complete Foundation & IELTS are guaranteed a place into a suitable programme in Irish & UK universities. A conditional offer letter will be issued prior to admission at the International School Of English.

STUDENT ASSESSMENT

Step 1

● Placement Test

When you arrive at our school you will be assessed for your CEFR level using a 25 questions multiple-choice test, which tests your grammatical and vocabulary ability. A short speaking assessment will also be done to assess your starting spoken and listening level. This overall ability will then form the DOS's opinion on appropriate placement.

Step 2

● Progression Testing

As part of a continuous assessment every student will do a mini-check of covered areas and do a consolidation exercise at least once a week. An overall progression database will be built for every student. We have a centralized student database, which tracks your progress and development at every step of the term.

Step 3

● Level Testing

If you have met the learning outcomes in the four skills for your level you will then take a Cambridge (PET/KET/FCE/CAE) level test to exit that level of proficiency. The Director of Studies/ Assistant Director of Studies will oversee any exiting students to ensure you will have made the appropriate progress in the four skills for this level.

Step 4

● Continuous development

A series of evaluation forms will be circulated throughout the term for your completion, (every 6-10 weeks). Your teacher will be doing a needs assessment in the first two weeks of term to best tailor the learning plan and structure appropriate lessons.

Step 5

● Feedback and Meeting with the Educational Director

We encourage feedback from you the Student. Our teachers are here to give you advice, guidance and support on your learning journey.

The Director of Studies is available by appointment. The notice board in the main common area shows any new academic bulletins so keep in touch!

Work Experience and Internship

We offer a programme which allows you to study English while making the most of your experience which can last six weeks or more. Before you even arrive in Ireland, we will have made all the arrangements for a work placement suited to your specific requirements, taking into consideration your professional specialization, qualifications, work experience, level of English, age and duration of your stay.

As soon as you enroll, we can provide you up to 3 interviews with different companies that can possibly hire you.

Job placements in a wide range of fields

- Hospitality and Tourism
- Sport and Leisure
- Environment
- Culture and Heritage
- Secretarial and Office
- Administration
- Retail
- Finance
- Accounts and many others

Unpaid job offers that varies according to the candidate's background and availability of vacancies.

You can combine your work experience with any English course.

Benefits of this programme

- 20 English hours per week
- 20 to 40 hours work per week
- A certificate of achievement
- A skills assessment Certificate
- A reference letter

How to apply

Submit your booking form between 8 and 12 weeks before your preferred start date, and also send us the following:

- A copy of your CV
- A photocopy or scanned copy of your passport or ID Card (when applicable)
- A copy of your motivation letter

Requirements

- European students
- Minimum age: 18
- Minimum level of English: Intermediate/B1+
- Minimum length of course: 6 weeks

How to apply: Submit the 4 required documents which are Passport Copy (or ID Card when applicable); Curriculum Vitae; Motivation Letter and Application Form.

Process must start at least 8 weeks prior to programme commencement.

English for Specific Careers



Our Special Interest Programmes are a series of professional development classes which expose learners to a wider variety of language and subject matter than that typically found in a General English class.

This series aims to introduce learners to a variety of different contexts in which English is used. By studying and exploring the subject matter itself (Business, management, tourism, journalism), learners will gain a deeper appreciation of its language conventions.

Course details

Module	Description	Hours Per Week	Timetable	Days
English for Business & Project Management	How Project management is the engine of any Company / Business	5 hours	18:00 20:30	Tuesday & Thursday
Tourism: Hotel and Catering English	Develop English language skills for working in the tourism and hospitality industries		18:00 20:30	
English for Journalism and Media	Specialist course for media professionals who want to hone their writing skills as well as work on their overall communication strategies.		18:00 20:30	
English for Banking and Finance	English for Banking course focuses on developing your English language skills for meetings, presentations and negotiations in the context of banking and finance		18:00 20:30	

Trinity's Integrated Skills in English (ISE)

Trinity's Integrated Skills in English (ISE) is a contemporary four skills qualification intended for young people and adults – typically at school, college or university. It is also suitable for teachers and other adults who require a respected English language qualification.

ISE assesses students' ability to interact in English in an authentic and meaningful way through the use of integrated reading and writing tasks and integrated speaking and listening tasks. Preparing for ISE builds real-life English skills and transferable skills required for academic study and employability.

What is the Trinity ISE Exam?

The Integrated Skills in English (ISE) exam is an international English language test offered by Trinity College London. Trinity ISE tests all four English language skills – speaking, listening, reading and writing.

The ISE exam is a widely recognized test worldwide.

The exam tests your ability to interact in English through integrated reading & writing tasks and integrated speaking & listening tasks. Preparing for ISE helps you build real-life English and transferable skills which are required for academic study and employability.

Overview and resources

There are two exam modules: Reading & Writing and Speaking & Listening.

The exam modules can be taken together, or at different times, when students are ready. Stu-

dents must pass both modules to gain an ISE qualification.

ISE is available at five levels from A2 to C2 on the Common European Framework (CEFR), so there is a level for every learner.

Useful Information



END OF PROGRAMME EXAMS AND RECORDING OF RESULTS:

ISE POLICY:

All registered English language Stamp 2 study visa learners are required to take an external examination to verify their learning. Learners will agree their end of course exam at registration and these details will be recorded on their GNIB letter.

Procedure: Stamp 2 Visa Learners must take such an examination and the designated exam suite for learners of General English is the TIE (Test of Interactive English).

Learners may alternatively take one of the following exams at the end of (or during) their full time programme of study: FCE

(First Certificate in English), IELTS (Inter-national English Language Testing System), CAE, CPE, PET.

The Director of Studies and the Director of Operations are jointly responsible for education, enrollment and the subsequent secure recording of results.

At the time of registration all registered learners must take our end of course exam for study visa purposes and are required to sign a contract acknowledging their awareness of the need to take such an exam.

TIE examination learners complete an enrollment agreement for their programme of study.

FCE and IELTS exam students are enrolled at the beginning of term at a recognized exam centre.

Holiday and Closure Dates:

- 17th March
- Good Friday
- First Monday of May
- First Monday of June
- First Monday of August
- Last Monday of October
- 19 December to 9th January

Obligatory Examination / Exam body Registrations

- TIE €110 (at the end of programme)
- FCE €175
- CAE €185
- IELTS €195

First Day at ISE (Induction Day):

PLACEMENT TEST:

- Long-term / full time students Speaking + CEFR level test Tuesday / Thursday from 2p.m to 4p.m
- Short-term students - test online: <http://www.cambridgeenglish.org/test-your-english/adult-learners/> - Induction day : Mondays with Director of studies. 9a.m: Morning Classes / 1:45p.m: Afternoon Classes
- Welcome student pack
- International student documents provided within 5-7 days from start date.
- For Non - EEA Student – GNIB Letter and insurance policy will be provided in 5-7 working days.

Accommodation

• Homestay

Homestays are the best option to experience the culture deeper and learn further about local people. This is highly recommended for students who want to feel closer to the Irish life style, including home cooking and the opportunity of practicing the language through conversation.

The student can also experience living in a very typical environment, which enriches their immersion in the local culture



Single or twin room
Shared family bathroom
Breakfast and evening meal every day
Light laundry facilities

• Student Residence

Our houses are intended for individuals who really want to enjoy the student accommodation experience. All of our residences are located in safe areas of the city and most of them are very close to the College. These residences are well equipped with all standard conveniences such as TV, washing machine, dishwasher, microwave, cooker and central heating. Free broadband Internet access.



Single, twin and multi-bedded room
A light breakfast is provided

• Hostels

We hold very solid partnerships with hostels around the college area as we believe that many students look for budget accommodation options in addition to a good place to socialize with people coming from all over the world.

Our hostels are checked and approved to receive our students



Single, twin, triple and Multi-bedded room with breakfast included in most cases

Student Support

Student Services is dedicated to ensuring each student attending ISE Ireland is aware of the resources the school offers through their department. This includes college and career counselling, academic assistance, student activities that incorporate speaking and listening, scholarship workshop, and health insurance

assistance. We understand our students are far from home and strive to ensure that they are well taken care while attending ISE Ireland. It is our goal to make every student feel like a member of the ISE Ireland family and to be successful in each aspect of their learning experience.

Our individual student services include:

- Study Lounge/Self-study centre
- Accommodation placement
- Student counselling
- Airport pick-up and drop-off service
- Local insurance
- Prepare for a Job interview
- Activities indoor and outdoor
- Orientation programme



Ian O'Meara At your service

My name is Ian and I am the Centre Manager here in the school.

I look forward to welcoming you to ISE and helping you in any way I can. During your time at ISE I will be your contact from induction on your first day, to help you with every step of the process. At the induction I ensure each student is happy with their assigned class and discuss what they can expect from

the school during their course. I will be located at the entrance of the school building; this also gives me a great opportunity to meet and get to know each student personally, which is very important for this role. Outside of this role, I also coach the school soccer team which is a great way for the students to make new friends, have some fun, and speak English!

Social Activities

The ISE social activities have the reputation as being the hottest ticket in town. From our legendary road trips around Ireland to the social nights that will make you wonder why you didn't start learning English before. The ISE social programme is designed for you to relax and take in the

atmosphere while you build relationships with new friends that will last a lifetime. You will feel like you never want to leave Ireland.

In ISE you work hard and play hard, but practice even harder, that is what our social events are all about.

**So let's start
making memories
and see you at ISE**



Some of our activities include

BBQ & Beats

A tasty and music mix of South American grilling techniques and some great music with an electric atmosphere.

Beer Pong

Everyone loves testing there beer pong techniques, why not take on another country in our world cup tournament.

ISE Impact

We hold the crown of having the #1 Football team in Dublin among all MEI Schools. Come join the team and let's play.

St Patricks Day

This is our favourite time of year, we get to revel in the festivities all week long at ISE, from treasure hunts to 'Craic agus Ceol' (Fun & Music) and absorbing what it really means to be Irish just for one day.

Sambrero Night

With spicy hot food from Mexico and Latin music, ISE sets off the fire alarm on this night not for the faint hearted!!!

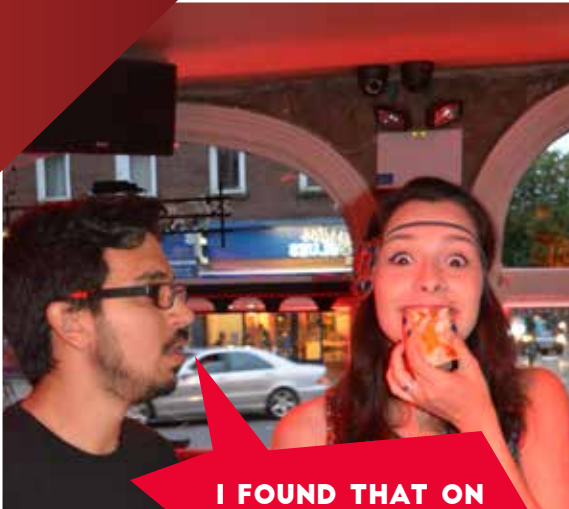
Karaoke Night

This is always an interesting evening, lets rock with the nations of the world to the sound of our favourite songs but not our favourite singers.

And many more....



Social Activities



**I FOUND THAT ON
THE FLOOR**



**YOU NEED
DANCING CLASSES.
NOT ENGLISH CLASSES.**





THEY STILL DON'T
KNOW I'M IRISH



I WAS UP ALL NIGHT
COOKING THIS FOOD



WE NEED ONE MORE PERSON
FOR OUR BOY BAND. YOU
INTERESTED?





|I|S|E|
THE INTERNATIONAL
SCHOOL OF ENGLISH
IRELAND

☎ +353 1 621 9039 🌐 www.iseireland.ie ✉ info@iseireland.ie

📍 26 Harcourt Street, Dublin 2 . Dublin . Ireland



Recognised by ACELS, a service of
Quality and Qualifications Ireland,
for English language teaching (ELT)